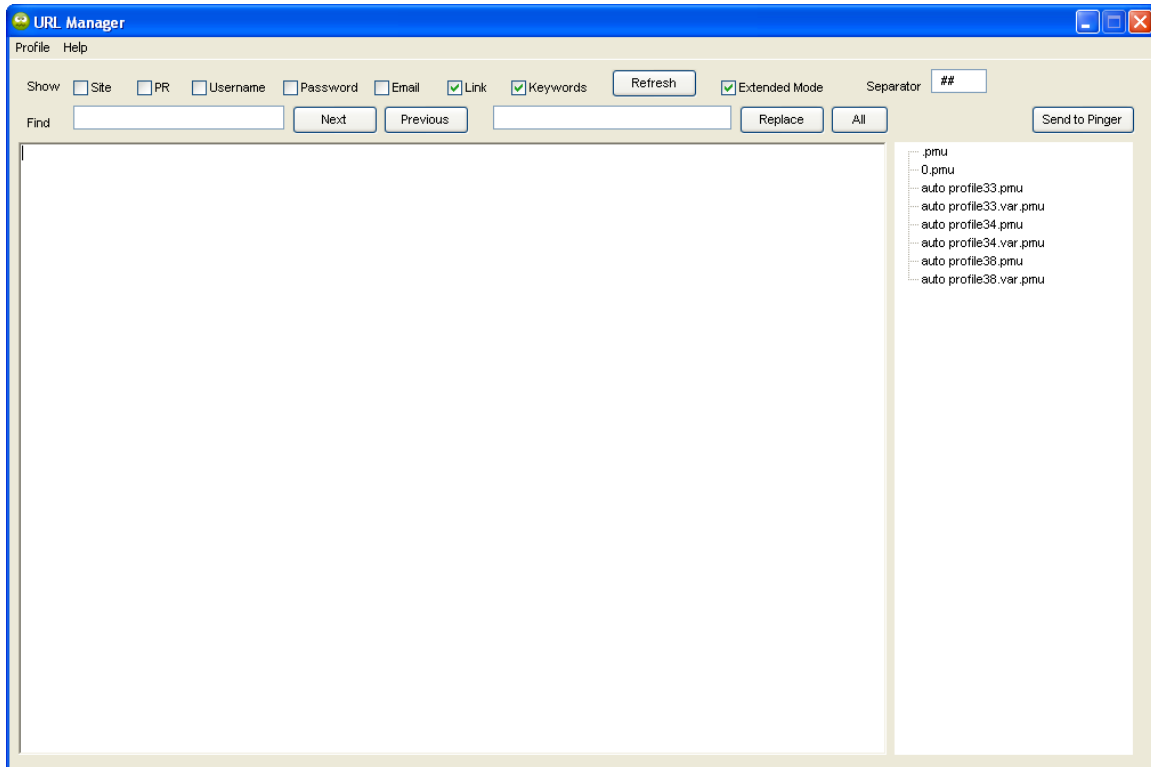


# Sick URL Manager

## Documentation



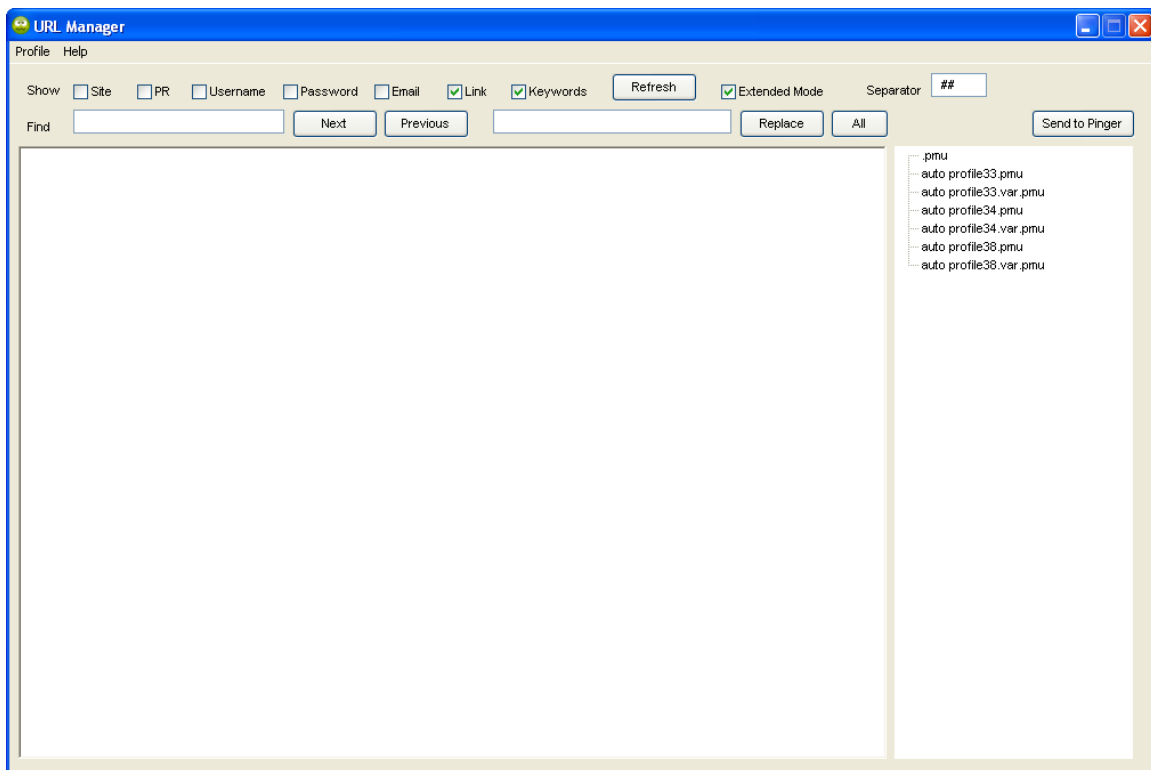
## Sick URL Manager

The Sick URL Manager was created for several reasons. The first being we felt a better way was needed to track your links for both reporting and testing. The second reason was it gave us a way to reuse them in link wheels, while creating profiles.

To access the Sick URL Manager click the URL Manager Icon.



## The URL Manager



The top row of the Sick URL Manager shows your display options.

Site ó The root of the site used to create a profile.

PR ó The PR of the site your profile was created on.

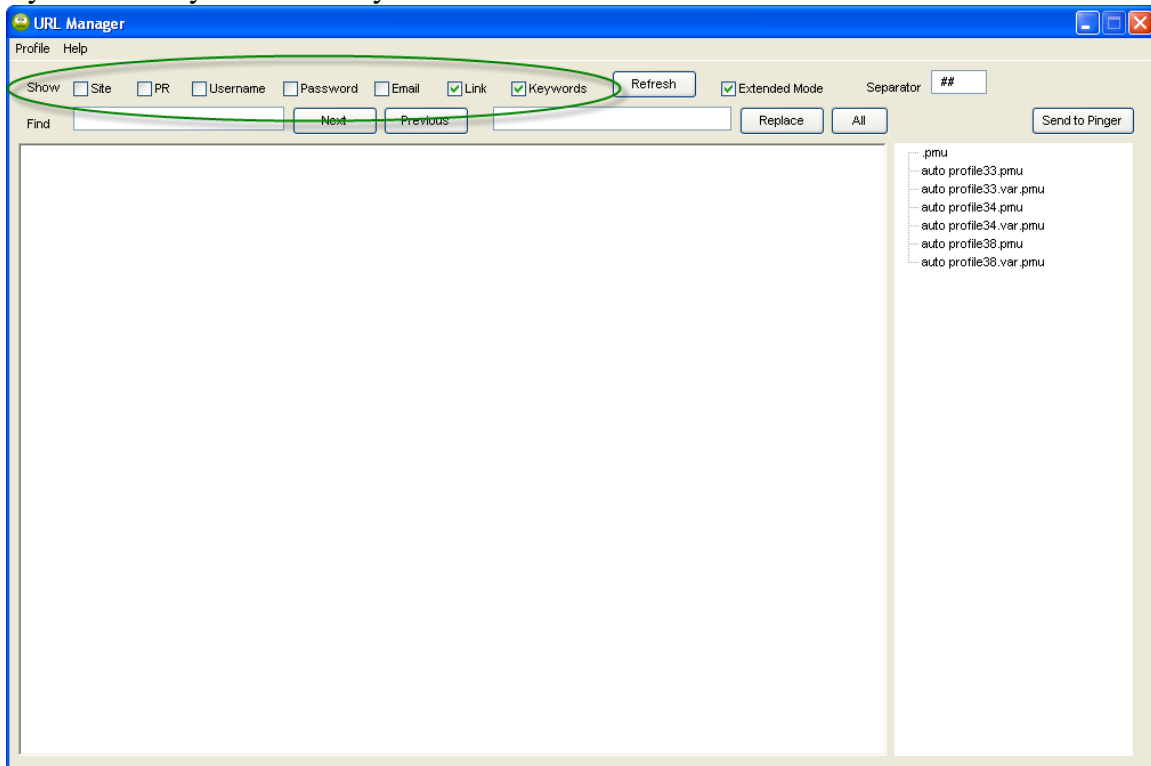
Username ó The user name used when creating your profile.

Password ó The password used when creating your profile.

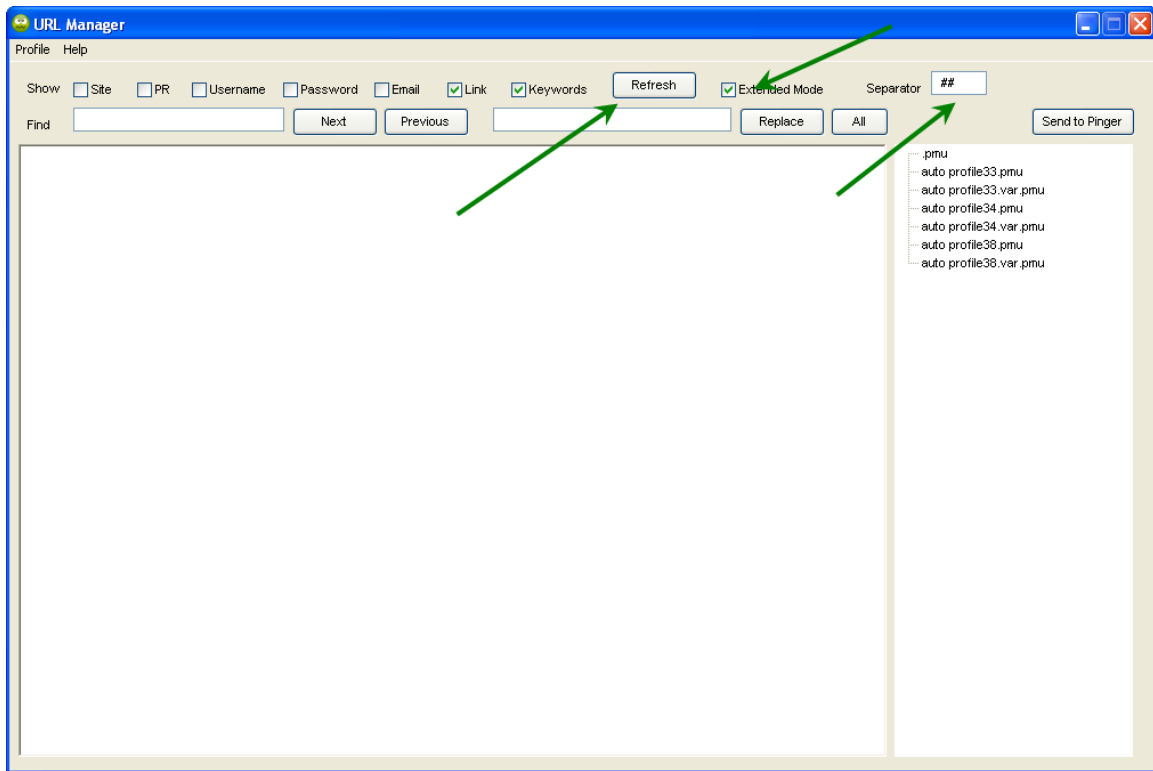
Link ó The link to your created profile

Keywords ó The anchor text used when creating your profile link

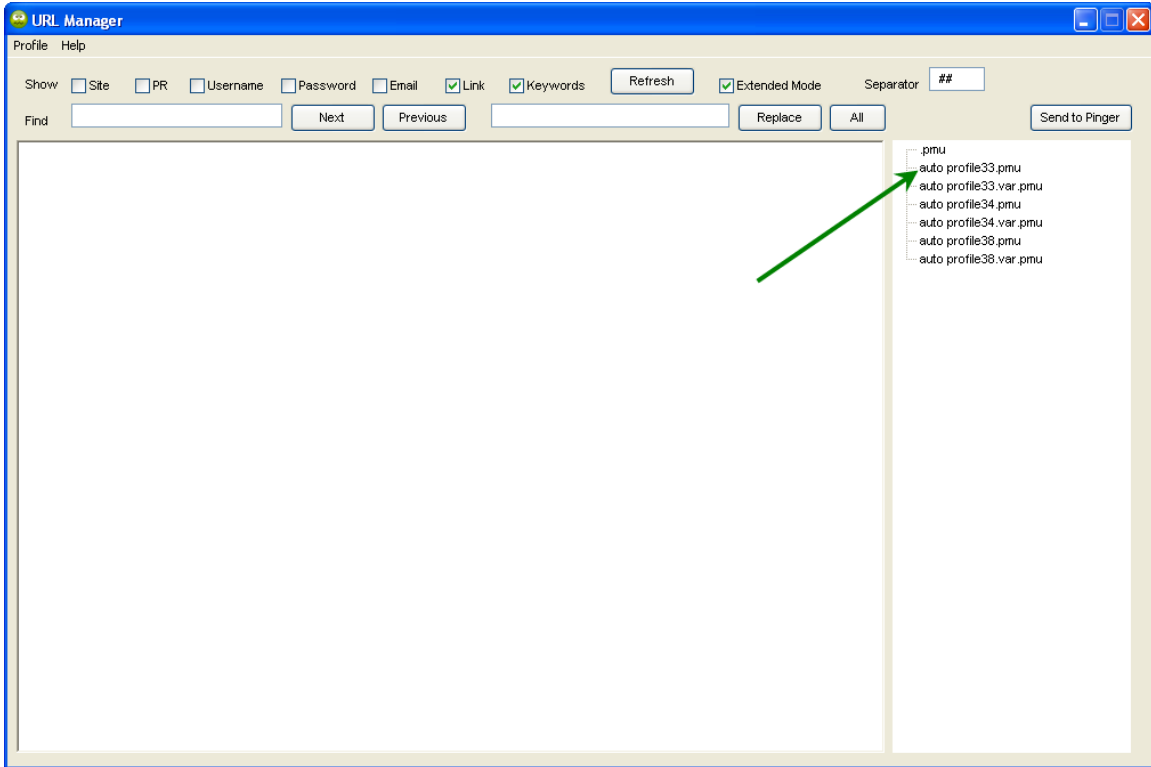
By default only Link and Keywords are shown.



The Refresh button will clear and refresh the data displayed. The Extended Mode check box makes the URLs clickable, and adds visibility colors to differentiate the data. The separator is appended to show where data ends and begins. It can also be helpful for importing data into other programs such as excel.



You can selectively add URLs to work with by selecting the profile names to the right. Each profile will have a profile.pmu file. Clicking it will add the data to the window. You can click multiple profile.pmu files for extended link info.



Once the Sick URL Manager contains the data you need, you can use the find and replace options to modify or remove any data. Or you can choose to send the URLs to the Sick Pinger.

